

AN FRANCISCO PENINULA SILICON VALLEY

HOME

GENTRY

JULY | AUGUST 2013

an Artful
TRANSFORMATION
*inside the Spectacular PV
Decorator Show House*

2013 **SID**
DESIGN AWARDS

The 500 Year Builder
ASILE OROS

Gardener Extraordinaire
BETSY KEHOE

AND THE GH REGISTER



HOME

ESTABLISHED 1994 • JULY/AUGUST 2013

Features

2

HAT A SHOW!

The recent Peninsula Volunteers, Inc., Decorator Show House in Woodside was a landmark event for the Bay Area Design community. The spectacular 10,000 square foot Monterey Colonial style manse set on 2 rolling acres in horse country drew over 3,000 visitors and garnered national attention. In case you missed it, we offer a portfolio of the beautifully designed spaces for your perusal.

66

AND THE INNERS ARE . . .

entry Home is proud to be a sponsor of the 2013 American Society of Interior Designers (ASID) Peninsula Chapter Design Competition. In this issue, you will find a selection of images from the award winning entries.

Departments

10

EDITOR'S LETTER

14

MY LIFE

18

FAB FINDS

22

ASK THE EXPERT

24

ECO DESIGN

28

A CHEF'S RECIPE

32

ENTERTAIN &
DELIGHT

72

THE GH
REGISTER

82

PETS &
THEIR DESIGNERS

In the Details

Design aficionados should have a lot of fun with this issue. Instead of our usual home features, this month we spotlight the dramatic spaces from the recent Peninsula Volunteers, Inc., Decorator Show House in Woodside. This extraordinary Show House garnered national attention and was featured in the *Wall Street Journal*, as well as countless other publications and blogs. Over 3,000 visitors toured the 10,000 square foot manse set on 2 lush acres in the middle of Woodside's spectacular horse country. And over two dozen of the Bay Area's most talented

designers breathed new and exuberant life into this historic home (*What a Show*, page 52).

As you study the photos of the Show House rooms, you'll note not just differences, but details. In the world of decorating, what sets a great designer apart from the rest is that attention to detail. These rooms weren't staged; they were engineered from the ground up. Nothing was left to chance. Take a few moments

to really enjoy each photo and spot the surprising layers of design, whimsy, and beauty. There's a reason that this cadre of designers is at the top of their game.

We also include the award winners from this year's Peninsula Chapter of the American Society of Interior Designers (ASID) Awards Competition. The chapter broadened its category criteria this year to include separate awards for contemporary and traditional design—a bold and important move as trends and tastes change (*And the Winners Are*, page 68).

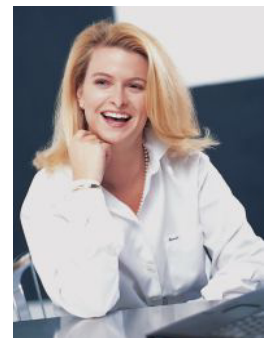
Our departments also focus on people and craftsmen who are leaders in their fields—from award winning cookbook author and organic farmer David "Mas" Matsumoto and his latest delicious tome, *The Perfect Peach* (Recipes, page 28), to Master Gardener Betsy Kehoe and her innovative approach to sustainable gardening (*Coming Up Roses*, page 24). Master craftsman Vasile Oros takes us on a personal tour of his workshop, where the mantra is "500 years, nothing less" (*Built to Last*, page 4). Acoustics expert Connie Norlander shares tips on building the ultimate home theater (*Sweet Sound of Success*, page 22), and floral and event designers Aili Ice and Amanda Thorne, of Aili Ice Designs at Rosewood Sand Hill, discuss parties—fabulous parties (*Floral Focus*, page 32).

Looking to update your garden or patio? Our editors have discovered some of the hottest outdoor furnishings and accessories (*Garden Chic*, page 20). And jewelry moves into the bath. We highlight lavish fixtures and fittings that boast crystal accents and strands of pearls (*Bathing Beauty*, page 8). Finally, we take a peek at the serene garden that plant expert Davis Dalbok of Living Green shares with his delightfully exotic Alexandrian Ringneck Parakeet (*Pets & Their Designer*, page 82). Enjoy!



Stefanie Lingle Beasley

stefanie.lingle.beasley / edit@18media.com





WHAT SHOW!

The Peninsula Volunteers, Inc., Decorator Show House in Woodside last May was a smashing success. Thousands of design aficionados flocked to the 11,000-square-foot Monterey Colonial-style manse situated on 21 exquisite acres to see some of the best interiors in a decade. Just in case you missed it, here is a portfolio of some of the sublime spaces.

PHOTOGRAPHY BY JACK HUTCHESON



LADY'S MAS ER BA H
Johnny Moallempour
MJM Interior Design
San Francisco
415.452.2883
<http://mjmintorials.com>



LADY'S MASTER BATH
Johnny Moallempour
MJM Interior Design
San Francisco
415.452.2883
<http://mjmintorials.com>



MASTER BEDROOM SUITE
GENTLEMAN'S MASTER BATH
Johnny Moallempour
MJM Interior Design
San Francisco
415.452.2883
<http://mjmintorials.com>



MASTER BEDROOM SUITE
Johnny Moallempour
MJM Interior Design
San Francisco
415.452.2883
<http://mjmintorials.com>



MASTER BEDROOM SUITE
Johnny Moallempour
MJM Interior Design
San Francisco
415.452.2883
<http://mjmintorials.com>